

# HD03

- Vascular Access Patency**  
 The [HD03] allows you to proactively manage your patients as part of a multidisciplinary vascular access care program to reduce complications and costs of end-stage renal disease. *Duda, CR et al, Nephrology News & Issues, 2000; 13-16.*
- Dialysis Adequacy**  
 Recirculation and delivered blood flow measurements provide important information about the most appropriate and effective therapies for your patients. *Sands, JJ et al, ASAIO, 1996; 43: 76; Depner, TA et al, ASAIO 1995; 41.*
- Cardiac Function (Cardiac Output Option available)**  
 Integration of cardiac output measurements into an ESRD treatment program forestalls the devastating progression of cardiovascular disease. *MacRae JM et al, Am J Kid Dis 2004; 43(5).*

### Testimonials

“Transonic flow monitoring is the cornerstone of my Vascular Access Management Program (VAMP).”  
*Spergel, LM, MD, FACS, Dialysis Management Medical Group, San Francisco*

“The Transonic Flow-QC Hemodialysis Monitor has benefited numerous dialysis-dependent patients by reducing and, in many cases, eliminating the agony of a clotted AV graft or fistula, thereby facilitating correction of access stenoses on an elective basis that prevents missed dialyses and the need for placing temporary catheters.”  
*Depner, T, MD, UC Davis*

“When the total cost of treatment for thrombosis related events for grafts was estimated, it was found that during phase III, the adjusted yearly billed amount was reduced by 49% versus phase I and 54% versus phase II. ...the comprehensive cost is markedly reduced due to the decreased number of hospitalizations, catheters placed, missed treatments, and surgical interventions. Vascular access blood flow monitoring along with preventive interventions should be the standard of care in chronic hemodialysis patients.”  
*McCarley, P et al, Kid Int 2001; 60(3): 1164-1172.*

“Sequential measurement of AV access flow is an acceptable means of both monitoring for the development of access stenoses and assessing response to therapy.”  
*Schwab, SJ et al, Kid Int 2001; 59:358-362.*

“Total costs in the Transonic measurement period (summary of angiography, angiography and PTA, hospitalization days, and operation costs) are reduced 31% when compared to the reference period .”  
*Wijnen, E, Hemodialysis Int 2005; 9(1).*

“...graft flow measurements are helpful in selecting patients at risk for graft thrombosis.”  
*Bosman, PJ, et al., Kid Int 1998; 54:1726-1730.*

“The Transonic device has become fundamental to my vascular access management practice.”  
*Levine, M, MD, Milwaukee Nephrologists, Milwaukee, WI*

Transonic Systems Inc. is a global manufacturer of biomedical flow measurement equipment. Founded in 1983, Transonic sells its “gold standard” ultrasound transit-time flowmeters, hemodialysis, endovascular and laser Doppler perfusion monitors worldwide to surgeons, nephrologists, interventional radiologists, researchers and original equipment manufacturers (OEMs).

For more information or to arrange a product demonstration, contact:

USA	Europe	Asia/Pacifica
Transonic Systems USA 34 Dutch Mill Rd. Ithaca, NY 14850 Tel: 607-257-5300 Fax: 607-257-7256 www.transonic.com support@transonic.com	Transonic Systems Europe B.V. Punterweg 31 6222 NW Maastricht The Netherlands Tel: 31-43-407-7200 Fax: 31-43-407-7201 info@transonic.nl	Transonic Systems Asia Inc. 6F-3, No. 5, Hangsiang Road Dayuan, Taoyuan County 33758 Taiwan R.O.C. Tel: (886)-3399-5806 Fax: (886)-3399-5805 info@transmedic.com.tw



**TekMed™**  
 1300 720 727

12 Bellevue Crescent Preston Victoria 3072 Australia  
 T (03) 9487 9999 F (03) 9484 8792  
 info@tekmed.com.au www.tekmed.com.au

**TekMed NZ™**  
 Ph: 0800 456 217  
 info@tekmed.co.nz  
 www.tekmed.co.nz

# Intelligent Dialysis

- Vascular Access Flow
- Dialysis Adequacy
- Cardiac Function

# HD03



## Proactive Patient Surveillance

Preserve an Access, Save a LIFE



The Flow Measurement Specialists

\*IV pole not supplied as part of system

# HD 03

## Intelligent Dialysis

## Intuitive Operation

### Quality Care

K/DOQI (Kidney Disease Outcomes Quality Initiative) Guidelines have set the standard for hemodialysis care. The HD03 allows patients to be assessed according to K/DOQI guidelines, or customized parameters, as desired.

### Quick, Accurate Results

Quick Transonic measurements translate into higher efficiency for the clinician and reduced overhead for the facility.

### Patient Status Reports

The HD03 generates patient reports in an easy-to-read and customizable format. Now, a doctor's request for a patient report is just a few clicks away!

### Risk Assessment

Patients, identified by the HD03 as having a high risk for a failing access, can be put on the built-in 'alert' watch list. These patients can be monitored more frequently, so that an intervention can be scheduled in a timely manner. 'Alert' list reports can be generated on a periodic basis for closer surveillance.

### Data Management

The HD03 also offers database management and synchronization capabilities. The removable Data Transfer Module can be uploaded to a computer running the HD03 Administration software, and information can be transferred by the synchronization feature. Data can also be imported and exported to and from the Administration software to compatible databases after each measurement.

### Safety/Infection Control

The HD03 screen can be cleaned with a dilute solution of bleach or soap. Since the input keys are displayed on screen, this prevents any possible cross contamination among users.



### Easy to Use

To measure delivered blood flow, vascular access flow and recirculation, just follow the pictorial directions on the user friendly and intuitive touch screen. The HD03 will prompt you to check the access lines, and will remind you to set flow levels. Obtaining results is a breeze with such an easy-to-use system.



### Easy Set-Up

The HD03 does not require an external computer for taking measurements. Relevant information is saved onto the included Data Transfer Module (DTM). Simply detach the DTM and insert into any computer USB port to upload and synchronize patient information to the HD03 Administrator software.



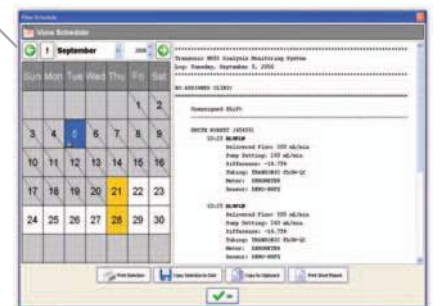
### Portable

Equipped with a rechargeable battery, the HD03 does not need to be connected to an external power source. This makes it convenient to use for measuring and monitoring during multiple patient rounds.



### Convenient

The HD03 Administrator program is equipped with an integrated scheduler/planner. Patients can be scheduled for their next visit, and the option to set up future appointments on a recurring schedule is also available. Patient notes can also be inputted into a comprehensive patient record. No more log notes and papers to handle!



Vascular Access Flow



Recirculation



Delivered Blood Flow



Cardiac Output